



# 鑫寶發興業有限公司

SAMPLE FINE ENTERPRISE CO., LTD.

台北市金山南路二段 138 號 5F 之 1

TAIPEI OFFICE: 5F-1. NO.138. SEC.2. CHIN SHAN S. RD.,

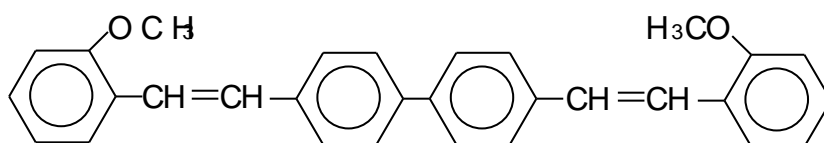
TAIPEI TAIWAN, R.O.C

TEL: (02)23920707(代表號)

FAX: (02)23223373

E-MAIL: spf0707@ms48.hinet.net

## FINETEX 127



Chemical Name	<i>1,1'-Biphenyl-4,4'-bis[2-(methoxyphenyl)ethenyl]</i>
CAS No.	40470-68-6
Molecular Weight	418
Appearance	<i>Slightly green-yellow fine powder</i>
Assay (HPLC)	<i>98% min.</i>
Melting Point	<i>216-222 °C</i>
Ash Content	<i>0.3% max.</i>
Loss on Drying	<i>0.5% max.</i>

### **Package**

*25 Kgs net/fiber drum.*

### **Uses**

*As a highly efficient optical brightener for polymers, lacquers, printing inks and man-made fibers.*